

LOT 920, VINTAGE RISE

Central Stage, Wooing Tree Estate, Cromwell



**FOWLER
HOMES™**

Est. 1984

YOUR STYLE OF LIVING



WELCOME TO FOWLER HOMES

Building kiwi homes since 1984,
let's build yours.

Fowler Homes has been in the home building industry since 1984, we have established a trusted brand with nationwide recognition. Our product offering is diverse, there is no job too big or too small. We provide custom design & build services, a plans range to build from or provide inspiration and direction, knock down and rebuild services, house & land, and turnkey packages across New Zealand.

At Fowler Homes, we pride ourselves on building the home that suits your section, budget, and lifestyle.

We work with you from the start to bring your ideas of your dream home to life, utilising years building experience and industry knowledge.

www.fowlerhomes.co.nz

HOME & INCOME PACKAGE



Lot 920, Vintage Rise
Wooving Tree Estate,
Cromwell

For Sale: \$1,350,000

Rental Assessment:

**Main House: \$800-\$840
per week**

Unit: \$450-\$480 per week







Vintage Rise has been designed for a Central Otago lock and leave lifestyle.

This corner section townhouse has a three-bedroom residence and a one-bedroom unit. The main house has an open plan living and dining area on the ground floor, along with one of the bedrooms. The second floor features a spacious master bedroom with a built-in wardrobe and ensuite bathroom, a third bedroom with a built-in wardrobe, a main bathroom, and a closed off laundry area.

The attached unit, with its own entrance, consists of a custom kitchen, laundry space, and living area on the ground floor, and a good-sized bedroom with ensuite and built-in wardrobe on the second floor. Perfect for extra income, extended family, or guests.

This well-planned home offers ample off-street parking and spacious outdoor areas, providing the best of central Otago living.

Specifications

-  Land Area 263m²
-  Floor Area 164 m²
-  Bedrooms 4
-  Bathrooms 3
-  Living 2
-  Off street parking



**FOWLER
HOMES™**


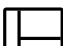
Est. 1984

YOUR STYLE OF LIVING

FLOOR PLAN

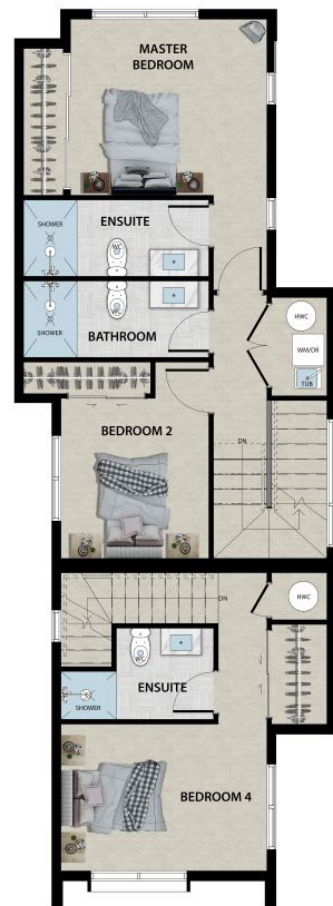
Lot 920, Vintage Rise, Central Stage Wooing, Tree Estate, Cromwell

Specifications

-  Bedrooms 4
-  Bathrooms 3
-  Living 2
-  Garage 0
-  Length 16.20m
-  Width 5.97m



Ground Floor



First Floor



**FOWLER
HOMES**TM

Est. 1984

YOUR STYLE OF LIVING

HOME FEATURES

Lot 920, Vintage Rise, Central Stage, Woongi Tree Estate, Cromwell

INTERIOR

- Nordzco custom designed kitchen
- Custom wardrobe system
- Tiled bathroom floors and shower walls
- Daikin ducted heatpump to main house
- Daikin hi-wall heatpump to unit
- Harrisons carpet
- Thermal heart windows with SoluxE glass

EXTERIOR

- Colour steel T-rib profile
- James Hardie oblique weather board
- Charred Vertical timber weather board
- Vertical timber weather board
- Soft landscaping
- Concrete driveway and patios



THE LOCATION

Cromwell was established by gold miners, but now its treasure is stone fruit.

Woioing Tree Estate has nestled its roots in the heart of Cromwell. The town centre, Lake Dunstan, and vineyards are a short work or cycle away. The New Cromwell underpass was opened in August 2023 allowing safe access across the Highway 8B into the township. The town is home to New World, Fresh Choice, and other stores including Mitre10, Hunting & Fishing, Nicholls Garden & Pet Centre. There is a wide choice of cafes and eateries.

The region offers everything from water activities, wine & food festivals, golf, winter sports, cycling trials, and motorsport.

Woioing Tree Estate offers the best of Central Otago living.



LOCAL DEVELOPMENT - GOLD MINE

Construction of the proposed \$4.4 billion Central Otago gold mine could commence in 2026, contingent upon receiving fast-track approval.

Santana Minerals Chief Executive Officer, Damian Spring, stated that this "world-class project" benefited from the timely introduction of the Fast-track Approvals Bill, which preceded the company's resource consent application.

The company is preparing to submit a resource consent application to the relevant local councils in early 2025 and has concurrently applied for consideration under the government's fast-track legislation.

The proposed mine site is located across the Bendigo and Ardgour Stations, 20 minutes from Cromwell and approximately one hour's drive from Queenstown.



WHY BUILD WITH US?

6 SOLID REASONS TO BUILD WITH FOWLER HOMES

- 1** — Fowler Homes has been building homes for kiwis since 1984 and are one of the longest standing group home building companies in New Zealand
- 2** — We are New Zealand owned & operated. You will work directly with the business owners and their project management teams
- 3** — We offer a range of build options including custom design & build, standard plans range, house & land, and turnkey packages, knock down and rebuild
- 4** — We work with our clients and custom design your home, to suit your section, budget & lifestyle
- 5** — We have access to the best suppliers, contractors & group pricing rates and present you with a fixed priced contract
- 6** — Build with peace of mind, all our homes come with the 10-Year Master Builders Guarantee.

GUARANTEES

Every Fowler Homes build comes with a 10-year Master Build Guarantee. A Master Build Guarantee protects you through the building process and for the next 10 years.

—

Fowler Homes has a 12-month Building Defect Warranty Period, effective from the date of completion. This covers you for any defects that may become apparent after Completion and Final Inspection.

—

Individual supplier warranties and guarantees will also be available.



CONTACT US



Fowler Homes Queenstown
Jason McGirr, Managing Director
& Licensed Building Practitioner
027 324 7666
jason@fowlerhomes.co.nz



Online

Want to find out more about Fowler Homes? Visit fowlerhomes.co.nz for inspiration.



**FOWLER
HOMES™**

Est. 1984

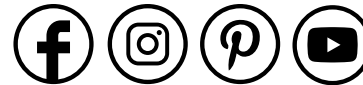
YOUR STYLE OF LIVING

**Proud to be locally owned
and operated since 1984.**

Testimonial

"We can wholeheartedly recommend Fowler Homes to anyone seeking a building company that delivers quality, professionalism, and a hassle-free building experience." Lisa Leftley

"Jason and his team have an excellent knowledge of the market, have good connections in the supply chain, and have quality systems in place. As a further indication of our satisfaction with Jason and his team at Fowler Homes - we are doing it all again!" Robin Martin



Social

Connect with us on social media for all the latest news, trend alerts and updates from our team.

@fowlerhomesnz

www.fowlerhomes.co.nz